

# The Arch Way



## The Newsletter for Friends of Archway Systems

VOLUME 19, NUMBER 8

AUGUST 10

### Archway Systems, Inc.

Southern California:  
2134 Main St, Ste. 160  
Huntington Beach, CA 92648  
  
Phone: 714-374-0440  
Fax: 714-374-0301  
tom@archwaysystems.com

Northern California:  
56 Nicholl Ave  
Point Richmond, CA 94801  
510-231-0502  
gmcmeans@egs-inc.com

WWW.ARCHWAYSYSTEMS.COM

WWW.VERSACAD.COM

### Inside this issue:

Who's Who at Archway Systems	2
Report: MicroStation SS2	2
Training Class Schedule	3
ProjectWise for Construction	4
3D Printer Specials	4
MyCADvideos.com	4

### Upcoming Events:

**August 2-4** — BIM Seminars at USC

**August 12** — CalCon Expo 2010 at the Pasadena Convention Center

**August 23-24** — Bentley LA Sustaining Transportation Infrastructure Seminars

**August 26** — Northern California Bentley Bash at Cal State Sacramento

**August 28** — Northern California Bentley Bash at UC Berkeley

### LACCD Board's Decision

On Wednesday, July 28, 2010, the Board of Trustees of the Los Angeles Community College District (LACCD) voted to authorize an agreement with Bentley Systems, Inc. to provide web-hosted Building Information Modeling (BIM) data management and collaboration systems/services at BuildLACCD and all District Colleges and their satellites from July 29, 2010 through July 29, 2013.

Bentley was selected from an RFP advertised for the services. Bentley was recommended by the selection committee to provide the system (ProjectWise) capable of reviewing, archiving, navigating and retrieving data from building information models submitted as deliverables for the District's construction projects.

This decision by the LACCD Board of Trustees strengthens the partnership with Bentley Systems, Inc. entered into earlier and supplements the BuildLACCD BIM specs that require Design-Build contractors to submit files in iModel or DGN (Bentley) formats at DSA (Division of State Architect) and As-Built phases for the Measure J campus expansion projects now underway on several of the nine LACCD campuses.

Bentley supplies several of the software options approved for use by Design Build contractors on the Measure J projects. Archway will be participating with Bentley to implement ProjectWise.

### Where to Meet Archway this Month

- On **August 4th**, Archway will be attending the BIM Seminar at USC. This date *only* is a free event, and the only event Archway will be at. The August 2nd and 3rd events do cost to attend and will focus on dialoguing with high level professionals. The August 4th event, however, will be focusing on BIM Analytics, covering broad topics on BIM in architecture, construction, and more.
- On **August 12th**, Archway will be at the CalCon Expo in Pasadena. This expo is designed to help you get government construction contracts. Get all the tools you need to compete at the highest level. This expo will also give you a great networking opportunity to meet with other contractors/subcontractors as well as major California public agencies. The cost of this expo is \$70 including the luncheon program. Or you can just visit the Expo exhibits and workshops for \$15. Register online [here](#).
- August 23rd and 24th**, Archway will be attending Bentley's Sustaining Transportation Infrastructure seminars in LA at the LA County Public Works Department from 7AM to 5PM. Power InRoads and LEAP Bridge will be featured during these seminars, as well as Power GEOPAK, MicroStation V8i, ProjectWise Dynamic Plot, and Haestad Solutions. These seminars are free and focus on DOT/MOT standards, practices and processes.
- August 26th and 28th**, Archway will be in Northern California heading up the Bentley Bashes taking place at Cal State Sacramento and UC Berkeley. Each of these days includes hands on workshops of the latest Bentley software, all complimentary training. Some of the topics to be covered are MicroStation V8i SS1, InRoads V8i SS1, ProjectWise, BIM Solutions and Promis\*e.
- For more information on any of these events, please contact Archway.

# Who's Who at Archway Systems

<b>Tom Lazear</b>	Administration, Sales & Training	<b>Josh Lazear</b>	Webmaster , Z Support and Programming
<b>George McMeans</b>	Sales & Training in Nor. Cal.	<b>Daniel Lazear</b>	Programming
<b>Mike Lazear</b>	Programming & Support	<b>Stephen Peters</b>	Building/Building Performance Sales
<b>Phill Frye</b>	Training & Consulting	<b>Chris Grubb</b>	Civil and Water Sales
<b>Greg Hamano</b>	Training & Support	<b>Lauren Jansen</b>	Marketing & Sales
<b>Sandy Lazear</b>	Accounting	<b>Shannon Lazear</b>	Marketing
<b>Linda Grubb</b>	Sales Manager		

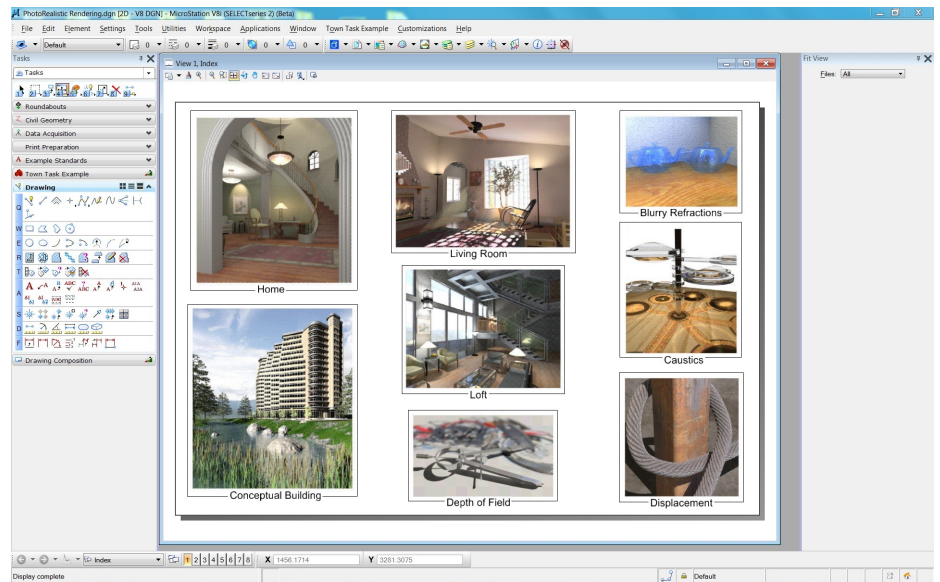
# REPORT

# MicroStation Select Series 2 (SS2)

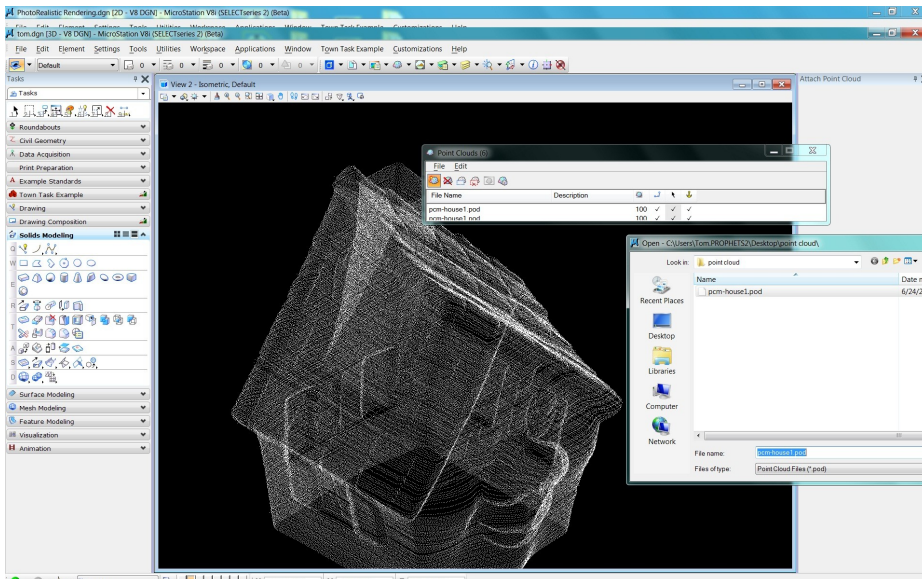
MicroStation SS2 has some pretty important new features, including Pointools, RealDWG, and a Luxology upgrade.

The new Point Cloud Manipulation tools are now included at no extra cost. These point clouds are a result of scans of existing buildings or other objects that result in hundreds of thousands of points which can be subsequently manipulated to create 3D computer screens or used as the basis for constructing solid models. The image below is a depiction of a point cloud scan of a house.

RealDWG has also been added to the new release of MicroStation as part of the 2008 agreement between Bentley and Autodesk that they would begin to integrate each other's models so that



Luxology renderings with the new upgrade.



Point Cloud representation of a house.

customers would more easily be able to transfer models between AutoCAD and MicroStation. RealDWG does just that, increasing the accuracy of transferring models.

The third new important feature is the Luxology upgrade that has been added to MicroStation which improves rendering of MicroStation models. The image above gives a few models of what you can do with the new Luxology upgrade.

All of these new features in MicroStation SS2 are great and easy to use. Also they are just some to the features available within MicroStation SS2. For more information on the new update, please contact Archway, or check out the Bentley website [here](http://www.bentley.com).

## Training Class Schedule

Archway offers a variety of training classes using the latest of each software. All classes use certified materials and are held from 8:30AM to 5PM. Locations: Huntington Beach training center (**HB**) and S.F. Bay area (**BA**). Classes can be delivered on-site and online. Call or email Archway for the latest class schedule. For the latest Bentley courses, see also: <http://www.bentley.com/en-us/training/>

### Upcoming MicroStation Classes

- **MicroStation Essentials** — This 4-day course is designed for the new MicroStation user and builds a solid foundation in the concepts, tools and features found in the MicroStation drawing environment. Starting with setting up a drawing and concluding with plotting, students walk through a typical workflow using the tools and features on the latest version of MicroStation. Cost is \$1400. Location: **HB**
  - ◇ **V8i SS1 Edition** — 8/10 to 8/13; 8/31 to 9/3; 9/14 to 9/17; 10/5 to 10/8; 11/9 to 11/12; & 12/7 to 12/10
- **MicroStation for AutoCAD Users** — This course is specifically for experienced AutoCAD users wanting to transition their CAD knowledge to MicroStation skills. The student will learn a wide range of topics beginning with how to incorporate existing data from AutoCAD into a new design file. Cost is \$1250. Location: **HB**
  - ◇ **XM Edition** — 8/18 to 8/20
  - ◇ **V8i SS1 Edition** — 9/29 to 10/1; 11/17 to 11/19; & 12/14 to 12/16
- **MicroStation User Update** — This course covers all of the major new capabilities of MicroStation V8i are covered in a series of hands-on exercises. Students will learn about Workflow Task based interfaces and Project Explorer among other topics. Cost is \$1025. Location: **HB**
  - ◇ **V8 XM to V8i SS1** — 8/16 to 8/17; 9/9 to 9/10; 10/19 to 10/20; & 11/22 to 11/23
- **MicroStation: Everything 3D** — In this course users will navigate and work in a 3D design file, create and edit 3D geometry in MicroStation, create parametric 3D models and develop a basic knowledge of the rendering capabilities of MicroStation.. Cost is \$1350. Location: **HB**.
  - ◇ **V8i SS1 Edition** — 10/12 to 10/15
- **MicroStation Advanced User** — This course is intended for the experienced MicroStation user and focuses on the features of MicroStation designed to improve user and work-group productivity. Cost is \$1250. Location: **HB**
  - ◇ **V8i Edition** — 9/22 to 9/24 & 11/3 to 11/5
- **MicroStation Accudraw Basics** — This course is for students wanting to increase drawing and modeling accuracy and speed by learning how to more efficiently use the Accudraw tool. Cost is \$450. Location: **HB**
  - ◇ **V8i** — 10/22

### Other Upcoming Bentley Classes

- **Bentley Map Fundamentals** — This course teaches students the features of Map Manager, including manipulating display, order and symbology of features, as well as working with topology. Cost is \$1250. Location: **HB**
  - ◇ **V8i SS1**— 9/1 to 9/3 & 11/8 to 11/10
- **ProjectWise Administrator Client** — In this class, users will discover the latest updates and enhancements in ProjectWise V8i administration, focusing on the options available to administrators within the application. Cost is \$2100. Location: **HB**
  - ◇ **Dates** — 8/17 to 8/19
- **Bentley Building Suite (3D) and Bentley Fundamentals V8i** — These courses allow users to learn different software products in order to create 3D building projects. Cost is \$1025. Location: **HB**
  - ◇ **Structural** — 9/8 to 9/9 & 11/16 to 11/17
  - ◇ **Architecture** — 8/10 to 8/11 & 10/5 to 10/6
- **InRoads Fundamentals V8i SS1 and Advanced Roadway Designer** — These courses introduce civil engineering designers to using InRoads software for road design projects. This hands-on training walks students through the project design cycle. The Advanced class is for students already familiar with InRoads wanting to learn more. Cost is \$1360. Location: **HB**
  - ◇ **Fundamentals** — 9/22 to 9/24 & 11/2 to 11/4
  - ◇ **Advanced** — 10/19 to 10/21

### Upcoming Rhino Classes

- **Rhino I** — In this class you'll learn to create and edit accurate free-form 3D NURBS models. This fast-moving class covers most of Rhino's functionality, including the most advanced surfacing commands. Cost is \$695. Location: **HB**
  - ◇ **Dates** — 9/15 to 9/17 & 11/16 to 11/18
- **Rhino II** — This class will be an advanced version of the Rhino I class following more intricate processes at a faster work pace. It will cover the rest of Rhino's functionality which you do not cover in the first class. Cost is \$695. Location: **HB**
  - ◇ **Dates** — 9/27 to 9/29 & 11/30 to 12/2

## ProjectWise for Construction

ProjectWise for Construction is a new package which Bentley has just announced. It offers turnkey installation at an affordable set pricing.

In this bundle you get software for Model and Drawing Management and Review, Clash Detection and Resolution, Automated 3D PDF Creation and much more! This package also includes set-up and configuration services, training and support.

ProjectWise is the world's leading collaboration solution for AEC projects of all scales. It helps streamline your operations by managing all of your documents in one place. This does not only support Bentley formats; ProjectWise also supports BIM, Revit, AutoCAD, Microsoft Office and many more formats.

Included specifically in this package is ProjectWise Integration Server, Web Server, Navigator, Clash Resolution Visa and Schedule Simulation Visa. Also Three different training opportunities are included, such as a three-day ProjectWise Administrator training class for up to 6 people.

Bentley wants to be there for you to help you through your transition to ProjectWise, so they offer support by email, phone or web 24/7/365.

If you're looking for a way to streamline your construction projects, ProjectWise for Construction is for you.

For more information on this product, check out the [brochure](#) or contact Archway directly.

## Archway's Product Line

Archway is a full service provider of technical software serving the Academic, Architectural, Civil and Mechanical Engineering markets.

### DESIGN & ENGINEERING SOFTWARE:

- MicroStation, ProjectWise and applications
- VersaCAD Win & Mac
- Bentley Architecture & Generative Components
- InRoads, PowerCivil & Geopak Civil Software
- Haestad Hydraulic Analysis Software
- Hevacomp & Tas Software
- Solid Edge and applications
- Promis\*e

### 3D GRAPHICS & ANIMATION SOFTWARE:

- Rhino 3D, Flamingo, Penguin & Bongo
- Bentley ProjectWise Navigator
- ArchVision libraries

### COMPUTER PERIPHERALS:

- Z Corp 3D Printers

### SERVICES:

- Training
- Phone support
- On-site support
- 3D Printing
- Customizing
- Consulting
- Contract software development
- CAD file translation

### Archway Training Center

Checkout the training classes on page 3. Classes for every need for MicroStation, Haestad, InRoads, STAAD.Pro, RAM, Rhino, Solid Edge and VersaCAD. Increase your design productivity.

### MyCADvideos.com

Checkout this site for free introductory videos and one hour webinars on the latest in CAD, FEM, and more.

### ZPrinters

Just like new Z 450 at half the price! Archway turns our demo machine at least once a year, and it is time for our demo 450 to go. If you purchase our printer and put it under warranty, it is just like a new printer. There is no difference. A used printer under warranty is the same to you as a new printer under warranty, only you save \$20,000. Two parties have already expressed interest. If you are looking for a printer, don't wait! First come, first served.

PRODUCTS

## ZPrinter<sup>®</sup> 450

World's Most Automated and Affordable Color 3D Printer





\$39,900\*



\* Manufacturer's Suggested U.S. List Price for Printer only. Options, shipping, local taxes and duties not included.