

The Arch Way



The Newsletter for Friends of Archway Systems

VOLUME 19, NUMBER 11

NOVEMBER 10

Archway Systems, Inc.

Southern California:
2134 Main St, Ste. 160
Huntington Beach, CA 92648
Phone: 714-374-0440
Fax: 714-374-0301
tom@archwaysystems.com

Northern California:
56 Nicholl Ave
Point Richmond, CA 94801
510-231-0502
gmcmeans@egs-inc.com

WWW.ARCHWAYSYSTEMS.COM

WWW.VERSACAD.COM

Inside this issue:

Who's Who at Archway Systems	2
Report: ProjectWise Navigator	2
Training Class Schedule	3
STAAD.Pro Workshops for Educators	4
3D Printer Specials	4
MyCADvideos.com	4

Upcoming Events:

- Nov 15 — Hevacomp Online Workshop
- Nov 19 — STAAD.Pro Online Workshop
- Nov 29 — SketchUp, OpenStudio, and E+ Workshop

InRoads Videos on YouTube & MyCADVideos

Archway has recently put together a collection of videos on YouTube featuring InRoads. This is just the beginning. So far, there are two videos "[What is InRoads](#)" and "[Tip 1 InRoads Surfaces](#)." You can either follow these links or search for the names on YouTube.com.

The "What is InRoads" video gives you the general idea of what InRoads is and what the program can do.

The "Tip 1 InRoads Surfaces" is the first in a series of tips on different topics. This first one gives a brief introduction on how to view ground surfaces in InRoads.

Check them out and give us ideas for more tips you want to see about InRoads.

Bentley Bash 2011 is Around the Corner!

Saturday, January 22nd is coming up fast. You don't want to miss the Southern California Bentley Bash 2011 at Rio Hondo Community College. It's going to be better than ever with even more classes offered to fit your needs.

This year the options of classes include products such as MicroStation, ProjectWise, InRoads, Bentley Structural, Bentley Architecture, and Generative Components. Also Inga Morozoff of AskInga.com will be teaching!

For MicroStation there are many different levels of classes including Intro to MicroStation, MicroStation Tips and Tricks, Everything 3D, Intro to MicroStation VBA, and more.

You won't want to miss this free day of training, networking and lunch. Contact Archway for more information or to register for this wonderful opportunity.

SketchUp/OpenStudio/Energy Plus Workshop

On November 29th, 2010, Archway will be offering a SketchUp, OpenStudio and EnergyPlus (E+) class for just \$100. Come learn how to use these three simple free tools. SketchUp, OpenStudio, and E+ are free tools which are fast, simple ways to make your energy decisions at the preliminary stages of your design.

There will be two 4 hour sessions — 8AM to Noon and 1-5PM. Each session includes a manual, training and lunch all for just \$100. Contact Archway for more information on this upcoming opportunity.

AGC Southern California Construction Technology Expo

Tom and Danny Lazear from Archway attended the AGC Southern California Construction Technology Expo last month. It was a successful day of networking with colleagues and explaining the benefits of ProjectWise Construction to the attendees.



"Are 3D Mice a Smart Buy?"

Are you looking to weigh the benefits of owning and working with a 3D Mouse every day? Take a look at this article to answer many of your questions. It is a study which was conducted to see whether 3D mice actually improve efficiency and productivity. Check out the benefits for yourself [here](#). Contact Archway if you would like information on purchasing a 3D mouse.



Who's Who at Archway Systems

Tom Lazear	Administration, Sales & Training	Josh Lazear	Webmaster , Z Support and Programming
George McMeans	Sales & Training in Nor. Cal.	Daniel Lazear	Programming
Mike Lazear	Programming & Support	Stephen Peters	Building/Building Performance Sales
Phill Frye	Training & Consulting	Chris Grubb	Civil and Water Sales
Greg Hamano	Training & Support	Lauren Jansen	Marketing & Sales
Sandy Lazear	Accounting	Shannon Schoenberger	Marketing
Linda Grubb	Sales Manager		

REPORT

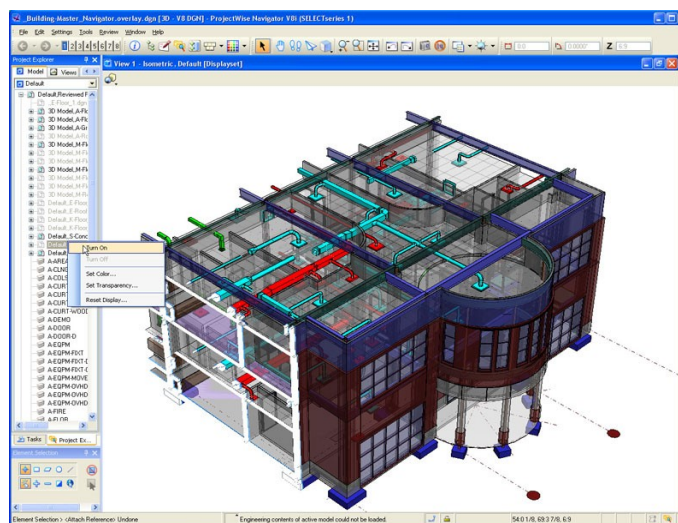
ProjectWise Navigator

Are you looking for an inexpensive way to review your designs? Do you not want to spend over 10K for a product that cannot review your designs with precise data? Then ProjectWise Navigator is the right solution for you. With the basic version starting at just \$120 annually, and even the highest version at only \$2295 annually, Navigator is the best solution for your design review needs. And if you have MicroStation, Navigator is already included in it.

Navigator works with i-models which can be created from many different design files using plug-ins specific to your design program. These i-models can be marked up for review with clouds and design notes or suggestions. These can then be viewed in the original design so that these corrections can be fixed, making your design process faster and more efficient. With Navigator, you can also cut away at models to check inside and perform walk- or fly-throughs of your designs.

The best part of Navigator is the fact that when design files are created in i-models, the data is not simplified. In the main competitive product, Navisworks, some of the data is

simplified, resulting in non exact measurements in some parts of the design. All of the data which Navigator works with is precise data which was originally planned in the design file. This is great for checking measurements of parts or buildings to ensure that the design is exactly what it is supposed to be.



An i-model being edited in ProjectWise Navigator.

Also, when you buy Navigator, with the \$795 annual package, you also get Clash Detection and Schedule Simulation. These are great additions to Navigator because they ensure the efficiency of your design process, eliminating unforeseen problems that can arise when, for example, you have a structural engineer and an HVAC mechanical engineer working

separately on the designs. With Clash Detection, you can make sure that a heating duct put in place by the HVAC mechanical engineer does not end up in the model going through a beam set in place by the structural engineer.

With Schedule Simulation, you can ensure that you know where you should be in the design model throughout the building process. Navigator and Schedule Simulation work together by syncing your model with your scheduling program in order to see the design model at each stage of the building process, such as 3 months, 6 months or 9 months down the line. This is great to keep your company on track and more efficient.

Overall, ProjectWise Navigator is the most efficient and most economical choice for a design review product. It saves hassle by finding design clashes and problems as well as allowing you to mark up the design to correct those clashes right away. With being able to see inside, out and all around the model, all with precise data information, you can ensure that your design model is precisely what you want it to be.

Training Class Schedule

Archway offers a variety of training classes using the latest of each software. All classes use certified materials and are held from 8:30AM to 5PM. Locations: Huntington Beach training center (**HB**) and S.F. Bay area (**BA**). Classes can be delivered on-site and online. Call or email Archway for the latest class schedule. For the latest Bentley courses, see also: <http://www.bentley.com/en-us/training/>

Upcoming MicroStation Classes

- **MicroStation Essentials** — This 4-day course is designed for the new MicroStation user and builds a solid foundation in the concepts, tools and features found in the MicroStation drawing environment. Starting with setting up a drawing and concluding with plotting, students walk through a typical workflow using the tools and features on the latest version of MicroStation. Cost is \$1400. Location: **HB**
 - ◇ **XM Edition** — 11/30 to 12/3 & 2/15 to 2/18
 - ◇ **V8i SS1 Edition** — 12/7 to 12/10
 - ◇ **V8i SS2 Edition** — 1/4 to 1/7 & 3/7 to 3/10
- **MicroStation for AutoCAD Users** — This course is specifically for experienced AutoCAD users wanting to transition their CAD knowledge to MicroStation skills. The student will learn a wide range of topics beginning with how to incorporate existing data from AutoCAD into a new design file. Cost is \$1250. Location: **HB**
 - ◇ **V8i SS1 Edition** — 11/17 to 11/19 & 12/14 to 12/16 & 1/26 to 1/28 & 3/19 to 3/18
- **MicroStation User Update** — This course covers all of the major new capabilities of MicroStation V8i are covered in a series of hands-on exercises. Students will learn about Workflow Task based interfaces and Project Explorer among other topics. Cost is \$1025. Location: **HB**
 - ◇ **V8 XM to V8i SS1** — 11/22 to 11/23; 1/10 to 1/11; 2/22 to 2/23; & 3/22 to 3/23
- **MicroStation: Everything 3D** — In this course users will navigate and work in a 3D design file, create and edit 3D geometry in MicroStation, create parametric 3D models and develop a basic knowledge of the rendering capabilities of MicroStation.. Cost is \$1350. Location: **HB**.
 - ◇ **V8i SS1 Edition** — 2/8 to 2/11
- **MicroStation Advanced User** — This course is intended for the experienced MicroStation user and focuses on the features of MicroStation designed to improve user and work-group productivity. Cost is \$1250. Location: **HB**
 - ◇ **V8i Edition** — 2/1 to 2/4

Other Upcoming Bentley Classes

- **Bentley Map Fundamentals** — This course teaches students the features of Map Manager, including manipulating display, order and symbology of features, as well as working with topology. Cost is \$1250. Location: **HB**
 - ◇ **V8i SS1**— 11/8 to 11/10
- **ProjectWise V8i User Essential** — In this one day class, users will discover the latest updates and enhancements in ProjectWise V8i. Cost is \$800. Location: **HB**
 - ◇ **Dates** — 1/25 & 3/15
- **Bentley Building Suite (3D) and Bentley Fundamentals V8i** — These courses allow users to learn different software products in order to create 3D building projects. Cost is \$1025. Location: **HB**
 - ◇ **Structural** — 11/16 to 11/17
- **InRoads Fundamentals V8i SS1 and Advanced Roadway Designer** — These courses introduce civil engineering designers to using InRoads software for road design projects. This hands-on training walks students through the project design cycle. The Advanced class is for students already familiar with InRoads wanting to learn more. Cost is \$1360. Location: **HB**
 - ◇ **Fundamentals** — 1/12 to 1/14
 - ◇ **Advanced** — 2/2 to 2/4

Upcoming Rhino Classes

- **Rhino I** — In this class you'll learn to create and edit accurate free-form 3D NURBS models. This fast-moving class covers most of Rhino's functionality, including the most advanced surfacing commands. Cost is \$695. Location: **HB**
 - ◇ **Dates** — 11/16 to 11/18; 1/11 to 1/13; & 3/1 to 3/3
- **Rhino II** — This class will be an advanced version of the Rhino I class following more intricate processes at a faster work pace. It will cover the rest of Rhino's functionality which you do not cover in the first class. Cost is \$695. Location: **HB**
 - ◇ **Dates** — 11/30 to 12/2 & 2/1 to 2/3; & 3/29 to 3/31

STAAD.Pro & Hevacomp Workshops for Educators

There is one more STAAD.Pro Online Workshop being offered this month on November 19th. If you haven't been able to make it to the last 2 sessions, you don't want to miss this one! It will be held 11AM to 2PM PST. This workshop is offered in hopes that even more educators will be able to attend.

There is also one last Hevacomp Online Workshop being offered on November 15th. This will be held from 10AM to 1PM PST. You don't want to miss this last session on Hevacomp.

STAAD.Pro is a program which helps your analysis process when analyzing structures. Hevacomp is an energy

analysis program to help you optimize the energy in your building.

These workshops are aimed at educators so that we can help you better understand a program which you might want to use or teach in the future, or are currently using or teaching. Our goal at Archway is to help better equip the educators of our up and coming field of professionals to be up to date on the latest software which can help energy and structural analysis.

These are the last two so you want to make sure you attend! Contact Archway for more information on these exciting workshops for educators.

Archway's Product Line

Archway is a full service provider of technical software serving the Academic, Architectural, Civil and Mechanical Engineering markets.

DESIGN & ENGINEERING SOFTWARE:

- MicroStation, ProjectWise and applications
- VersaCAD Win & Mac
- Bentley Architecture & Generative Components
- InRoads, PowerCivil & Geopak Civil Software
- Haestad Hydraulic Analysis Software
- Hevacomp & Tas Software
- Solid Edge and applications
- Promis*e

3D GRAPHICS & ANIMATION SOFTWARE:

- Rhino 3D, Flamingo, Penguin & Bongo
- Bentley ProjectWise Navigator
- ArchVision libraries

COMPUTER PERIPHERALS:

- Z Corp 3D Printers

SERVICES:

- Training
- Phone support
- On-site support
- 3D Printing
- Customizing
- Consulting
- Contract software development
- CAD file translation

Archway Training Center

Checkout the training classes on page 3. Classes for every need for MicroStation, Haestad, InRoads, STAAD.Pro, RAM, Rhino, Solid Edge and VersaCAD. Increase your design productivity.

MyCADvideos.com

Checkout this site for free introductory videos and one hour webinars on the latest in CAD, FEM, and more.

ZPrinters

Just like new Z 450 at half the price! Archway turns our demo machine at least once a year, and it is time for our demo 450 to go. If you purchase our printer and put it under warranty, it is just like a new printer. There is no difference. A used printer under warranty is the same to you as a new printer under warranty, only you save \$20,000. Two parties have already expressed interest. If you are looking for a printer, don't wait! First come, first served.

PRODUCTS

ZPrinter[®] 450

World's Most Automated and Affordable Color 3D Printer





\$39,900*



* Manufacturer's Suggested U.S. List Price for Printer only. Options, shipping, local taxes and duties not included.