

Archway Newsletter

New Bentley Products - OpenSite Designer & OpenFlows Flood

Bentley has introduced a few new products to round out its impressive catalog of software. **OpenSite Designer** and **OpenFlows Flood** are two of the new products Bentley has added.

OpenSite Designer

If you haven't seen OpenSite software from Bentley, watch this [short video](#). This new, from the ground up software is the best site layout and optimization tool on the market. Everything from optimizing the site to details to automated construction drawings. It is compatible with every CAD software including AutoCAD, MicroStation and more.

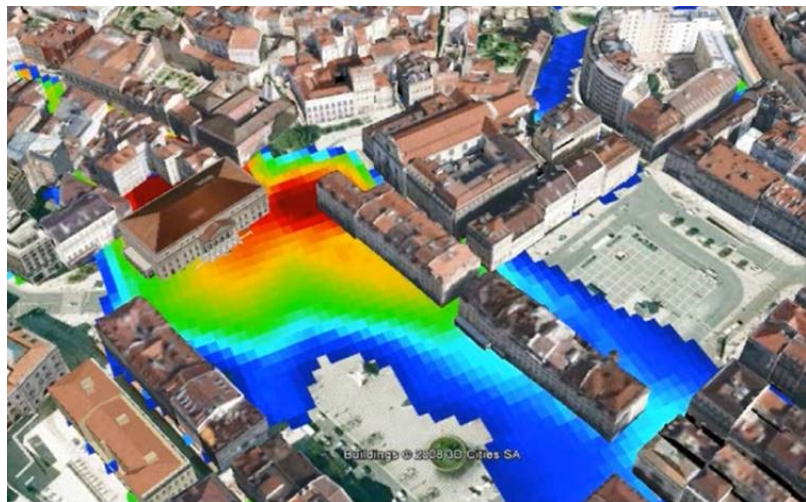
OpenFlows Flood

With all the concern about climate change and hurricanes causing flooding, Bentley's new software called OpenFlows Flood allows you to simulate and see how a given city or terrain will be flooded in case of disaster. See a demo of this product on [Bentley's website](#).

If you have questions, would like to see a demo, or would like an evaluation copy of either of these new software, please reply to this email.

Report: Digital Twins - What is it and Why is it Important?

Digital twins is a term applied to the idea of having a digital, computer model of a real asset, whose model is kept up to date over the life of the real asset. In a way, Digital Twin is just an extension of the BIM concept but is applied to all types of infrastructure over the entire lifecycle, starting from design through construction and on to operation.



A historic perspective provides the evolution:

- 1985 - MicroStation used to draw floor plans and road plans
- 1995 - 3D introduced with Triforma for buildings and InRoads for site design and highway
- 2005 - The Digital Twin has a large number of applications, more being discovered every day
- 2010 - Substation Design and ConceptStation
- 2019 - OpenBuildings Station Designer

Digital Twins is the logical extension of the development process. Here are a few examples:

- An article in the September issue of ENR entitled "[The Internet of Water](#)" discussed an application where a digital twin of the city of Lisbon, Portugal was used to test alternative scenarios and create a master drainage plan to reduce the impact of increased flooding. Bentley's new OpenFlows Flood software was used for the simulation and ContextCapture was used to create the model of the city.
- UC Berkeley recently completed creation of a 22 GB model of the campus to be used for modeling existing subsurface utilities and other uses. See it here: <http://3dcampus.fs.berkeley.edu>
- And graphically tracking the construction process is a well established use of a digital twin.

Check out Bentley's Robert Mankowski expresses Bentley's commitment to Digital Twins: <https://informedinfrastructure.com/49094/interview-with-robert-mankowski-vice-president-digital-cities-bentley-systems/>

Cal Poly Geomatics Conference - September 19, 2019

Join us at the annual Cal Poly Pomona CLSA Geomatics Conference this **Thursday, September 19, 2019**. It is an all day event featuring workshops by industry experts! Don't miss out on the latest in civil engineering software and hardware for land surveyors.

Archway will be hosting a booth in the Exhibit Hall so make sure you stop by and say hello! Registration is available at <https://www.eventbrite.com/e/cpp-clsa-conference-2019-tickets-62337310574>

Geospatial and Technologies Conference - September 20, 2019

Join us at East Los Angeles College this **Friday, September 20, 2019** for the Geospatial and Technologies Conference from **8am to 12pm**.

Archway will be an exhibitor so make sure you stop by and say hello! Registration is available at <https://www.eventbrite.com/e/save-the-date-elac-cal-poly-2019-geo-spatial-engineering-technologies-conference-tickets-64678955497>



We are a Bentley Platinum Channel Partner - Secure the best prices and service for your Bentley software needs. Buy with us today!



We are an Authorized Bentley Product Training Partner - See our current Class Schedule on LearnMicroStation.com

Shannon Schoenberger
(714) 374 0440
shannon@archwaysystems.com
www.archwaysystems.com
Archway Systems, Inc.

[Website](#) [Services](#) [About Us](#) [Contact Us](#) [Newsletters](#)

Connect with us

